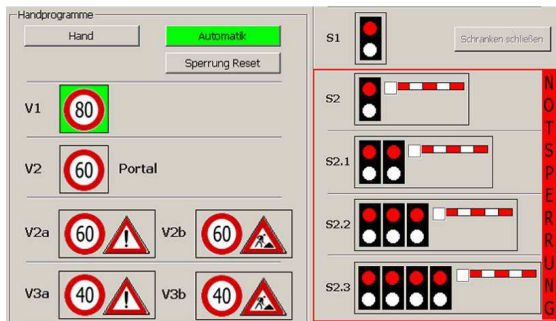




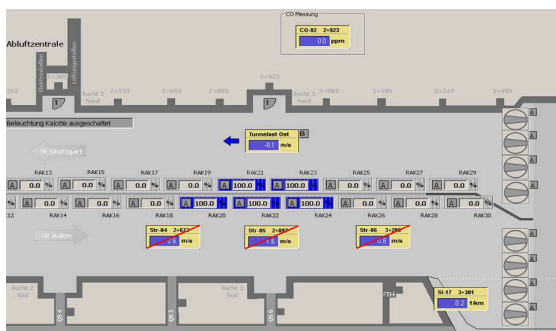
Technical installations in the tunnel



Operating window „Traffic programs“



Explanations on smoke spread in the tunnel



Operating window „Fire“

Description

The Gmünder Einhorn-Tunnel in Schwäbisch Gmünd was commissioned in 2013.

This single-pipe tunnel with a length of 2230 m has two lanes and one parallel rescue tunnel linked to the tunnel by 6 cross-connections, and two emergency staircases. The tunnel is operated in two-way traffic at 80 km/h. The technical traffic equipment corresponds to the extended equipment according to RABT 2006.

The control of the tunnel automatically detects and reacts to alarms, technical alarms and malfunctions. Manual interventions are possible and potentially necessary.

Services

For a continued tunnel supervision in the tunnel control centers according to RABT-2006, HBI Haerter Consulting Engineers carried out instructions for several groups with a total of 46 persons of the Integrated Control Center Aalen and the road maintenance depot of Schwäbisch Gmünd for the operation of the tunnel installation on the basis of the Alarm and Hazard Prevention Plan (AGAP).

The instruction covered three areas:

- Introduction to the content of the AGAP and the operating menus for the control of the tunnel (4h)
- Tunnel inspection with explanations on the entire technical equipment (4h)
- Practical exercises at the operator panel of the tunnel control center in groups of 2 (2h)

The focus was on the following issues here:

- Handling of the operator panel of the control of the tunnel installation on the basis of all events of the AGAP
- Identification of events and triggering of alarms
- Determination of the fire section with considerations on possible dangers of smoke spread in the tunnel

Instruction documents allowing for an independent repetition of the lessons were handed out to all participants.